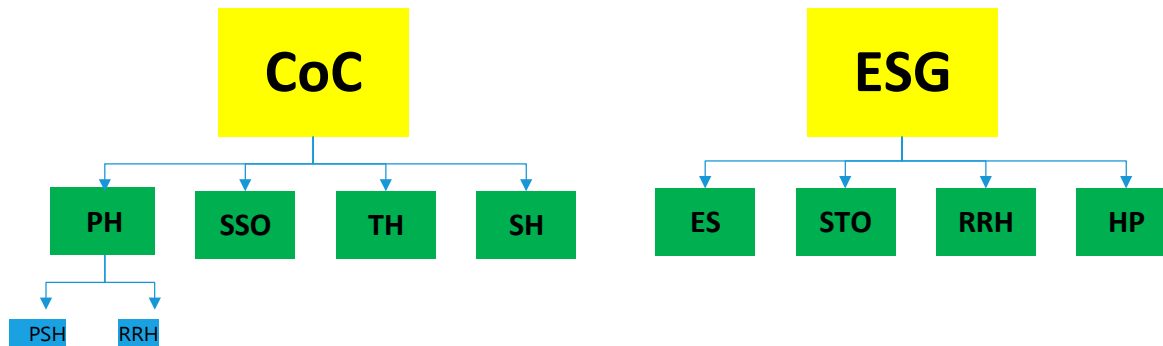


# HUD Program Types

## HUD Program Types



Term	Acronym (if used)	Brief Definition or Link
Permanent Housing	PH	Housing that may be supported by a voucher but does not have services attached to the housing.
Supportive Services Only	SSO/SO	A program that provides services with no residential component. These programs often provide case management and other forms of support and meet with clients in an office, at the household's home, or in a shelter. The only HUD-funded SSO is Coordinated Assessment.
Transitional Housing	TH	Transitional environments that have a planned length of stay of not more than 2 years and provide supportive services.
Safe Haven	SH	A program that provides low-demand shelter for hard-to-serve persons with severe disabilities. The clients have often failed in other sheltering environments.
Permanent Supportive Housing	PSH	Permanent Housing for the formerly homeless with services attached to persons served under this program.
Rapid Rehousing	RRH	A program that rapidly rehouses those that are identified as Literally Homeless.
Emergency Shelter	ES	Overnight shelters or shelters with a planned length of stay of fewer than 3 months.
Street Outreach	STO	A program that serves homeless persons who are living on the street or other places not meant for habitation.
Homeless Prevention	HP	A program that helps persons at imminent risk of losing housing, to retain their housing.
CoC Program, formerly known as Shelter Plus Care	S+C (formerly)	A voucher system that provides Permanent Supportive Housing to disabled persons throughout the catchment area and reports to the System.